



Accelerated College and Employability Skills (ACCESS) Academy



Accelerated College and Employability Skills (ACCESS) Academy

- A lab school that provides an innovative educational experience to high school students, who have not historically had access to opportunities and pathways that meet their needs and lead to high-demand and well compensated career opportunities, as they simultaneously work toward two- and four-year college degrees.
- A partnership among three of the largest educational institutions in the region:
 - George Mason University (Mason)
 - Northern Virginia Community College (NOVA)
 - Fairfax County Public Schools (FCPS)

Vision and Mission

Vision

To prepare adaptable lifelong learners that collaboratively and creatively solve complex problems in any setting, as technologies, the nature of work, workers, and the workplace evolve over time.

Mission

To provide new innovative pathways for traditionally underserved students toward high demand, well compensated careers, while simultaneously working toward two- and four-year degrees to maximize their earning potential over their work life.



Academic Overview



Innovative Teaching and Learning Methods



PBL-IT Curriculum Design:
IT curriculum designed within a problem-based learning approach, with increasing levels of complexity each year



Employability Skills:
Systems Thinking, Critical Thinking, Collaboration, Flexibility, Communication, etc.



Competency-Based Education:
Learning outcomes aligned to on-the-job competencies;
Performance-based assessments



Learn-and-Earn Model:
Paid internships with industry partners

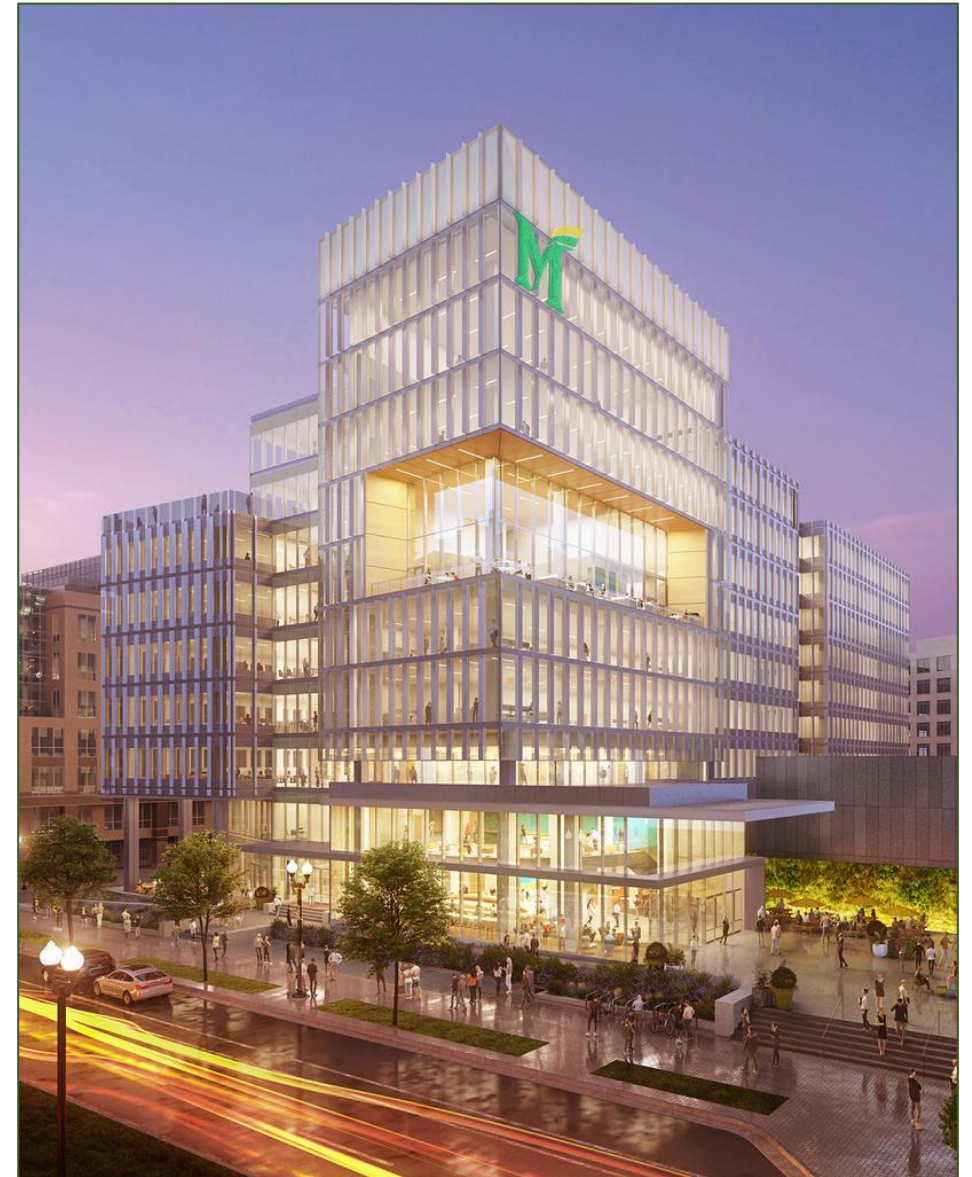
Learning Innovation Lab FUSE at Mason Square

ACCESS Academy will be an immersive experience in a state-of-the-art infrastructure with Public-Private partners.

- On-the-job paid internships (Learn-and-Earn model)
- Research experiences

The Academy will become a training ground of innovative teaching practices for current and future educators.

- Teacher candidates, in-service teachers, and IT faculty will develop skills in PBL pedagogy
- Active learning and development of learning strategies
- On-site observations and field experiences



Transdisciplinary Collaborations



Industry:

Authentic Problems & Case Studies

Internships

Mentors

Site Visits

Guest Presenters



CEHD and IT:

PBL IT Curriculum

Research & Innovations in Teaching
& Learning

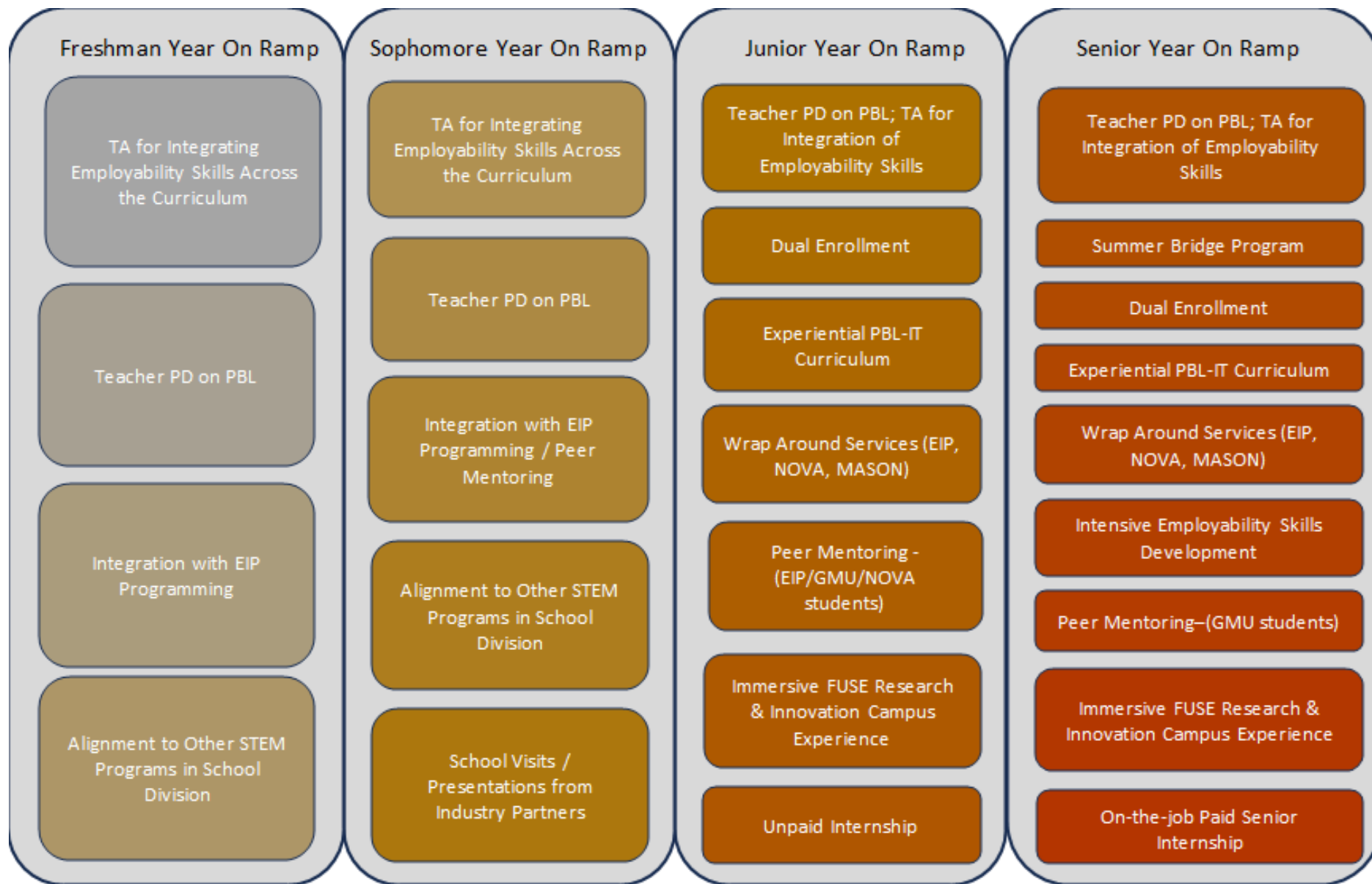


Mason, NOVA, FCPS:

Learning Ecosystem

Dual Enrollment

Wrap Around Services



AS to BS; Career Certificate; Job



College Credit toward BS; Micro Credential; Job

Short-Term Outcomes

- ACCESS Teachers will be competent in innovative teaching methods, specifically, Problem-Based Learning
- ACCESS students will develop foundational skills in Problem-Based Learning and Employability
- ACCESS wrap around services will reduce the administrative and financial burden associated with college admissions for students and families

Mid-Term Outcomes

- ACCESS 11th and 12th graders will earn 15-30 dual enrollment credits
- ACCESS graduates will have higher self-efficacy in their IT and employability skills
- ACCESS Academy graduates will earn micro-credentials and industry certificates
- ACCESS Academy graduates will be enrolled in two or four-year degrees while working in IT related fields for which they were prepared

Long-Term Outcomes

- ACCESS Academy graduates will earn two- or four-year degrees
- Employers will find ACCESS Academy graduates well prepared for their IT careers
- ACCESS graduates will increase their earning potential



Governance



ACCESS Academy Governance Structure





Operations



Location and Students



Annandale High School, Annandale, VA
A Fairfax County Public School

- ACCESS Academy will initially serve at-risk students in grades 11 and 12.
- Programming will be expanded to include students in grades 9 and 10 during 2025-2026 academic year.
- During the first year (2024-2025), ACCESS Academy will include a total of 60 students from grade 11 (n=30) and grade 12 (n=30). The following year, the Academy will expand to include grade 9 and grade 10 students.
- ACCESS Academy will always have Senior and Junior Year On-Ramps.

Annandale High School

- Services provided for students will be part of those provided to any other student in FCPS, including food services, transportation, school health, library, custodial, and security services.
- FCPS has identified available classrooms at Annandale HS to launch ACCESS Academy.
- Annandale HS is located approximate 1 mile from Interstate 495 in Fairfax County, convenient to students from FCPS and surrounding jurisdictions and close to Mason and NOVA.



NOVA Community College



Annandale Campus



Financial



- Over the 5-year grant, Lab School cost is estimated to be \$6,814,972
- We are requesting funding support in the amount of \$6,073,589.
- George Mason University’s cost share budget includes \$741,383.

	2024-2025	2025-2026	2026-2027	2027-2028	2028-2029	Projected Totals
-VDOE Start Up Grant Funds	\$1,000,000	\$0	\$0	\$0	\$0	\$1,000,000
-Estimated VDOE per-pupil Operating Grant Funds based on FY24 cost per pupil of \$9,578 (per student x projected enrollment of 60 students in year 1 and 120 in years 2-5)	\$574,680	\$1,149,360	\$1,149,360	\$1,149,360	\$1,149,360	\$5,172,120
-Mason In-Kind Contributions	\$134,751	\$141,184	\$147,938	\$155,031	\$162,479	\$741,383
Total Projected Revenue	\$1,709,431	\$1,290,544	\$1,297,298	\$1,304,391	\$1,311,839	\$6,913,504
Salary Support	\$657,017	\$664,668	\$642,039	\$674,141	\$707,849	\$3,345,714
Fringe Benefits	\$193,559	\$195,147	\$194,264	\$203,978	\$214,176	\$1,001,124
Materials & Supplies	\$195,000	\$22,500	\$32,500	\$17,500	\$7,500	\$275,000
Travel	\$10,000	\$10,000	\$10,000	\$10,000	\$10,000	\$50,000
Consulting/Professional Services	\$170,000	\$60,000	\$80,000	\$60,000	\$30,000	\$400,000
Participant Support & Incentives	\$51,060	\$51,060	\$51,060	\$51,060	\$51,060	\$255,300
Other General Costs	\$356,459	\$281,273	\$282,428	\$283,643	\$284,031	\$1,487,834
Total Projected Expenditures	\$1,633,095	\$1,284,648	\$1,292,291	\$1,300,322	\$1,304,616	\$6,814,972



Scale-Up and Sustainability



Scaling Up ACCESS Academy

- After the initial pilot year and any improvements have been implemented, ACCESS Academy will open up opportunities to other school divisions across the Commonwealth based on program capacity.
- Goal is to scale up based on pilot data.



Sustainability

