

Name _____

Bus A or Bus B?

You will take a bus trip across the country to see a professional football game. You have a choice of two buses.

- Bus A departs at 7:47 am and arrives at 8:14 pm. *bus A*
- Bus B is 12 hours and 53 minutes in length.

Both trips cost \$200. Which bus would you choose, Bus A or Bus B? Why?

Show your thinking using pictures, words, and symbols.



Start time	h.p./min.
7:47	+1hr 8:47 AM
+1hr	9:47 am
+1hr	10:47 am
+1hr	11:47 AM
+1hr	12:47 PM
+1hr	1:47 PM
+1hr	2:47 PM
+1hr	3:47 PM
+1hr	4:47 PM
+1hr	5:47 PM
+1hr	6:47 PM
+1hr	7:47 PM
	+13 min.
	+14 min.

$$\begin{array}{r}
 413 \\
 - 153 \\
 \hline
 260
 \end{array}$$

~~12hr 53min~~ Answer

12hr 27min.

I would choose bus A because it would take 12hr 27 min and bus B would take 12hr 53 min. and that's almost 13 hr. And 12hr 27 min is less time. Because bus A would get you there faster.

Bus A or Bus B?

You will take a bus trip across the country to see a professional football game. You have a choice of two buses.

- Bus A departs at 7:47 am and arrives at 8:14 pm.
- Bus B is 12 hours and 53 minutes in length.

Both trips cost \$200. Which bus would you choose, Bus A or Bus B? Why?

Show your thinking using pictures, words, and symbols.

Time	H/m
7:47	12hr
7:47	27min
8:14	

I would take bus A because it would take a shorter amount of time than bus B. The reason I know bus B takes longer than bus A is because if you subtract 12hr 27min from 12hr 53min you'll get 26min so that means it would take bus B 26 more minutes longer than bus A.

$$\begin{array}{r}
 4 \\
 \cancel{5}3 \\
 - 27 \\
 \hline
 26
 \end{array}$$



Name _____

Bus A or Bus B?

You will take a bus trip across the country to see a professional football game. You have a choice of two buses.

- Bus A departs at 7:47 am and arrives at 8:14 pm.
- Bus B is 12 hours and 53 minutes in length.

Both trips cost \$200. Which bus would you choose, Bus A or Bus B? Why?

Show your thinking using pictures, words, and symbols.

I chose bus a because

$$\begin{array}{r} 8:14 \\ + 7:47 \\ \hline 13:61 \end{array}$$

Name _____

Bus A or Bus B?

You will take a bus trip across the country to see a professional football game. You have a choice of two buses.

- Bus A departs at 7:47 am and arrives at 8:14 pm.
- Bus B is 12 hours and 53 minutes in length.

Both trips cost \$200. Which bus would you choose, Bus A or Bus B? Why?

Show your thinking using pictures, words, and symbols.

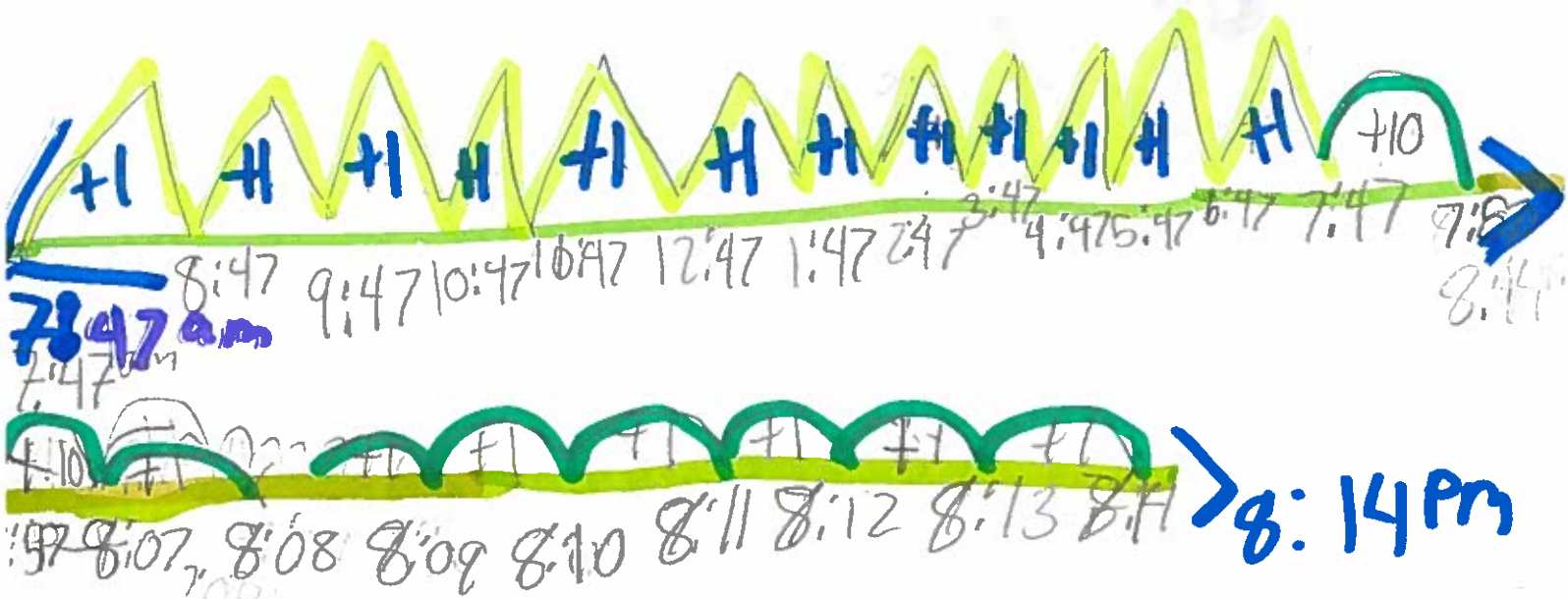
Mountain hills and Rocks

$\wedge = 1 \text{ hour}$

$\cap = 10 \text{ minutes}$

$\cap = 1 \text{ minute}$

12 hours
29 minutes



I would choose bus A b.

STUDENT D

I would choose bus-A because bus-A only takes 12 hours and 27 minutes but bus-B takes 12 hours and 57 minutes which is a 26 minute ~~difference~~ and depending on the time the game starts you might have enough time to get some snacks.

Proof

$$\begin{array}{r} 4.13 \\ 12.53 \\ -12.27 \\ \hline 0.26 \\ \hline 0.26 \end{array}$$

2020

Name _____

Bus A or Bus B?

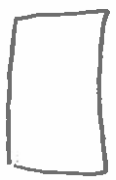
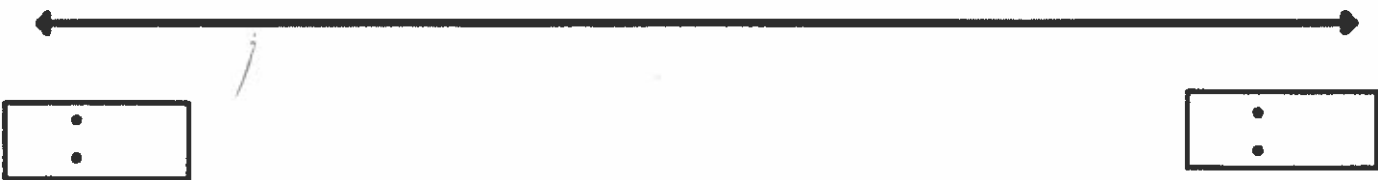
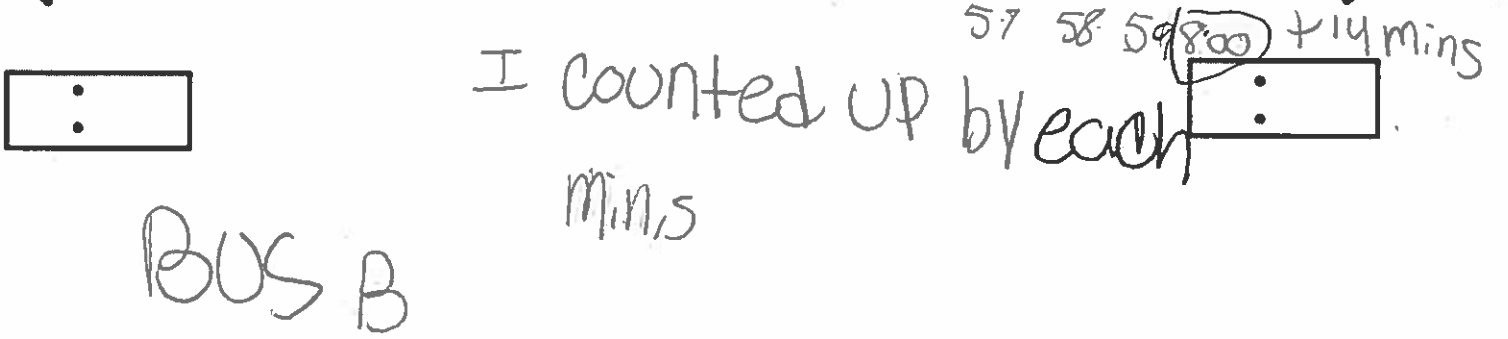
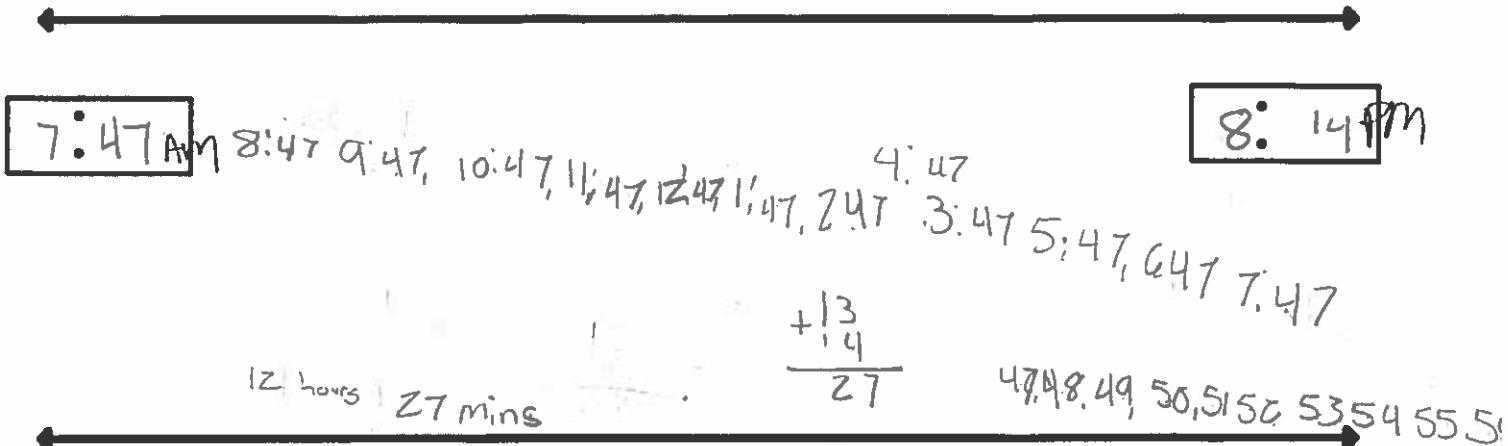
You will take a bus trip across the country to see a professional football game. You have a choice of two buses.

- Bus A departs at 7:47 am and arrives at 8:14 pm.
- Bus B is 12 hours and 53 minutes in length.

Both trips cost \$200. Which bus would you choose, Bus A or Bus B? Why?

Show your thinking using pictures, words, and symbols.

Bus B because the ride is longer
I can sleep longer we do not have
to do any work



Name _____

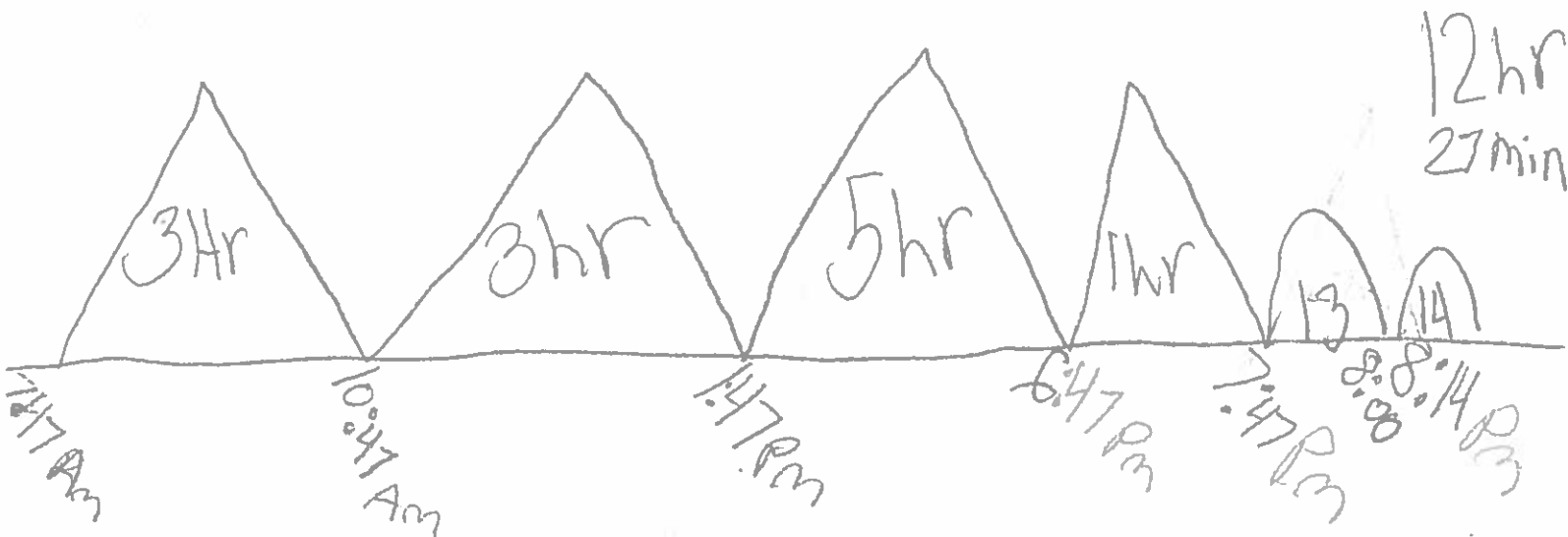
Bus A or Bus B?

You will take a bus trip across the country to see a professional football game. You have a choice of two buses.

- Bus A departs at 7:47 am and arrives at 8:14 pm.
- Bus B is 12 hours and 53 minutes in length.

Both trips cost \$200. Which bus would you choose, Bus A or Bus B? Why?

Show your thinking using pictures, words, and symbols.



I also checked
my work on a clock.

I found the difference
of 53 and 27

(13) (14)

I choose Bus
B because I like long bus
rides.

It would take 26
more minutes