

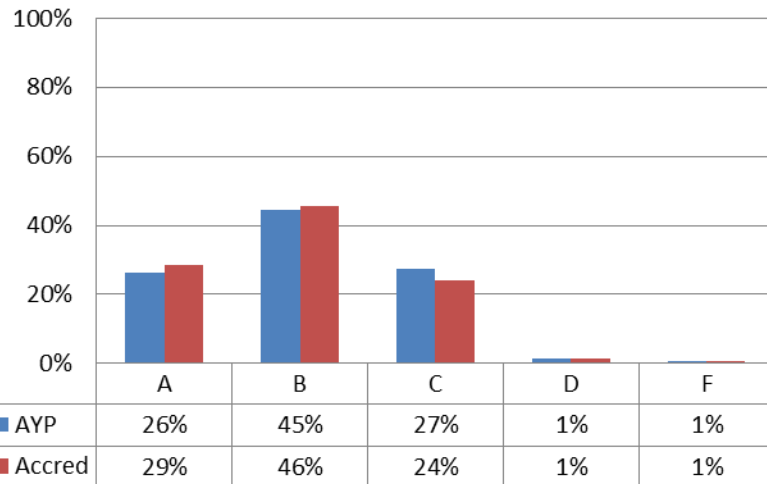
# Proposed A-F School Grading Formula Developed in Response to the 2013 Acts of Assembly

## Estimates using Federal (AYP) and Accreditation (Accred) Pass Rates

Presentation to the Virginia Board of Education  
November 2013

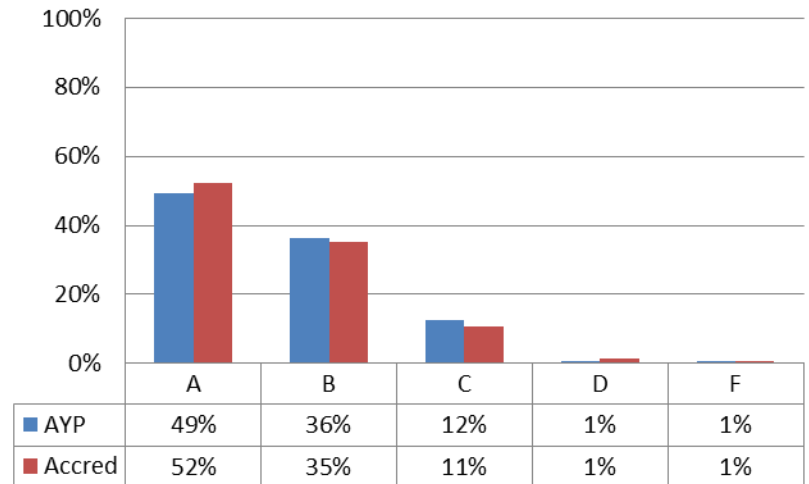
# Elementary Schools

**Elementary Option A**  
Includes up to 50 bonus points



39 schools increased letter grade using Accreditation calculation; 31 educate a large percentage of English language learners.

**Elementary Option B\***  
Includes up to 50 bonus points

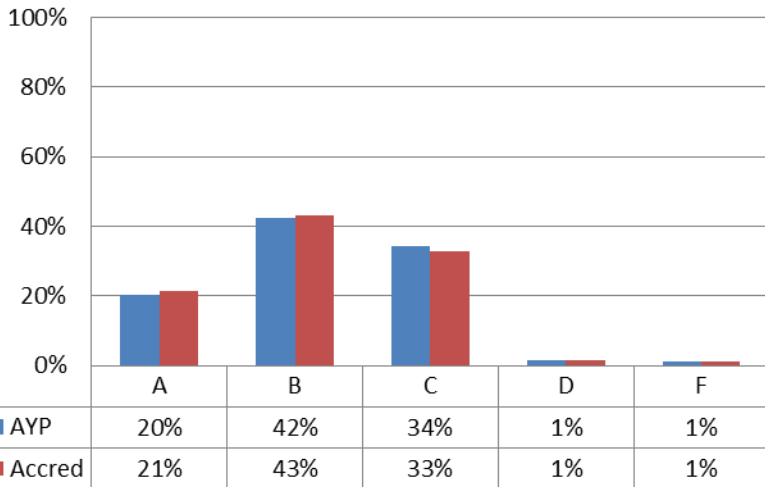


33 schools increased letter grade using Accreditation calculation; 27 educate a large percentage of English language learners.

\* The Superintendent of Public Instruction recommends Option B.

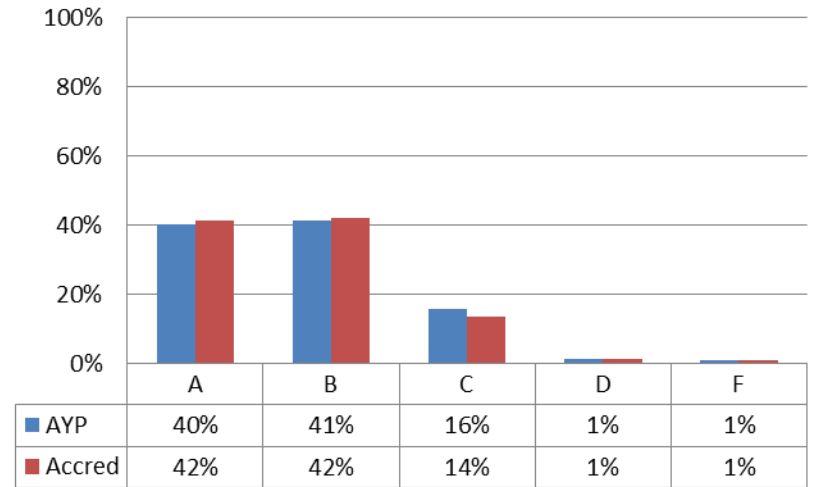
# Middle Schools

**Middle Option A**  
Includes up to 50 bonus points



5 schools increased letter grade using Accreditation calculation; 2 educate a large percentage of English language learners.

**Middle Option B\***  
Includes up to 50 bonus points

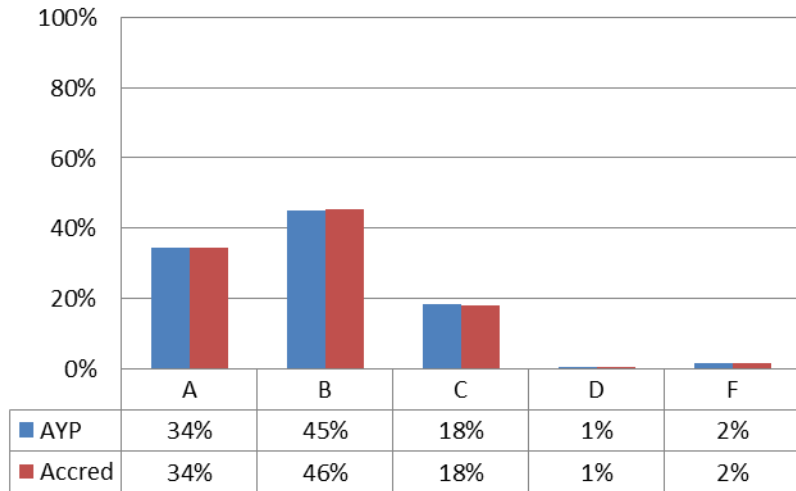


7 schools increased letter grade using Accreditation calculation; 4 educate a large percentage of English language learners.

\* The Superintendent of Public Instruction recommends Option B.

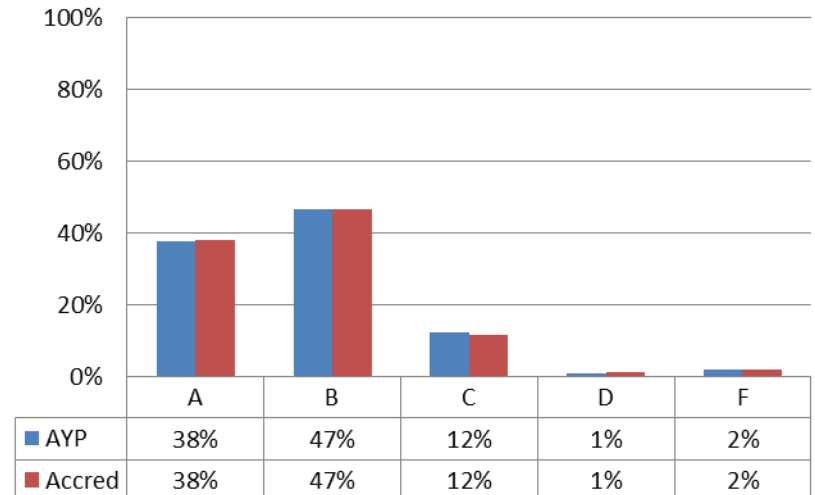
# High Schools

**High school Option A**  
Includes up to 50 bonus points



2 schools increased letter grade using Accreditation calculation; zero (0) educate a large percentage of English language learners.

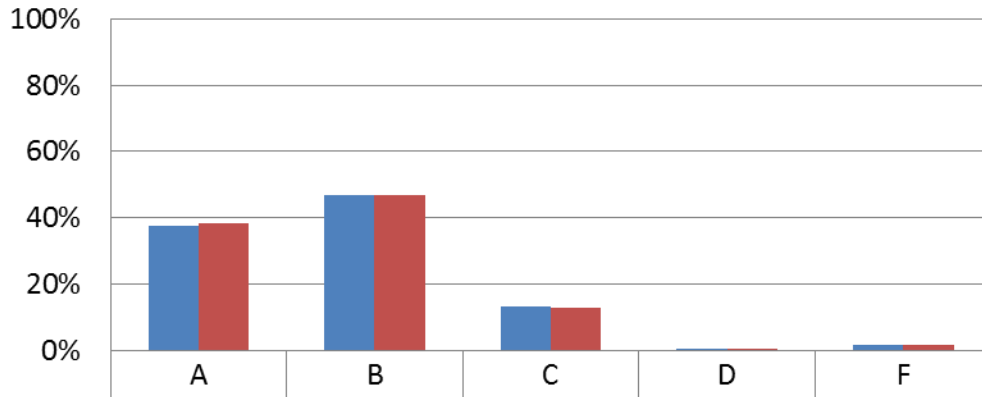
**High school Option B**  
Includes up to 50 bonus points



3 schools increased letter grade using Accreditation calculation; one (1) educates a large percentage of English language learners.

# High Schools A/B Hybrid

**High school\***  
**A/B Hybrid**  
Includes up to 50 bonus points



■ AYP	38%	47%	13%	1%	2%
■ Accred	38%	47%	13%	1%	2%

	Score Range	N- AYP	N- Accred
A	≥ 875	118	120
B	725-874	147	147
C	550-724	42	40
D	450-549	2	2
F	< 450	5	5

2 schools increased letter grade using Accreditation calculation; one (1) educates a large percentage of English language learners.

\* The Superintendent of Public Instruction Recommends the Hybrid A/B Option.

Estimates based on available data.  
Decision rules are not applied.