



Accountability Indicator Benchmark Setting: Graduation Rate and Dropout

Board of Education's Committee on School and Division Accountability

Dr. Heather A. Carlson-Jaquez

Research Analyst

January 25, 2017

Process for Defining School Performance Benchmarks

- ✓ 1. Select indicators: January
 - Graduation Completion
 - Dropout
2. Determine a recommended calculation
3. Examine the patterns in current data
4. Establish and test benchmarks for each level on the matrix

Process for Defining School Performance Benchmarks

Indicator Performance Ratings			
Level 1	Level 2	Level 3	Level 4

Choosing Calculations:

- ✓ Scientific studies on meaningful cut points
- ✓ Models from other states

Setting and Testing Benchmarks:

- ✓ Analysis of Virginia's data for patterns and trends
- ✓ "What if?" data modeling scenarios
- ✓ Validity checks
- ✓ Relationship with other drivers of school performance

Benchmark Selection Example: Graduation Rate

Calculation Selection

- ✘ • Part of College & Career Readiness Index
- ✘ • “On track to graduate” based on 8th or 9th grade cohort data
- ✘ • Percentage of students graduating in 4-year and 5-year cohort
- ✔ • Current Graduation Completion Index used in Virginia

Graduation and Completion Index (GCI)

- **The GCI calculation includes students in the cohort of expected on-time graduates**
 - students who were first-time ninth graders four years earlier,
 - plus transfers in and minus transfers out
 - students carried over from previous cohorts

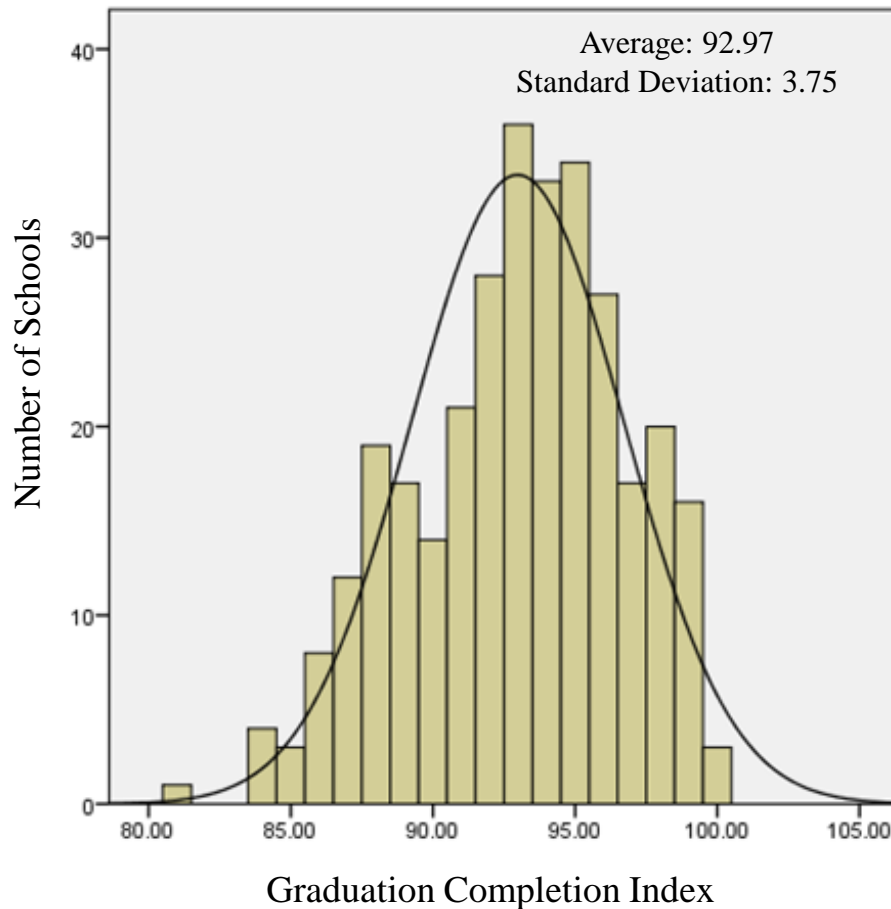
GCI Example

Outcome	Calculation		Results
	# of Students	Point Value	# of Students X Point Value
Diplomas	66	100	6,600
GEDs	3	75	225
Certificates of Completion	2	25	50
Students still in School	4	70	280
Dropouts	5	0	0
Totals	80		7,155
			$\text{GCI} = \frac{7,155}{80} = 89$

A GCI of at least 85 is currently required for full accreditation.

Data Patterns: GCI

Three-Year Average GCI Rate
School Years 2013-14 through 2015-16
(Outliers Removed)



- Schools fall into a normal distribution.
- Using a three-year average stabilizes the scores so that schools aren't moving across accountability levels yearly
- Three-year average GCI with outliers removed is 92.97
- Opportunity to increase standards from current benchmark of 85

Benchmark Selection: Graduation Completion Index

	Level 1 Exemplar	Level 2 Monitor	Level 3 Guiding	Level 4 Intervene
DRAFT Criteria	School three-year average GCI is equal to or greater than 97 (85 th percentile)	School three-year average GCI rate is between 88 and 96	School three-year average GCI meets narrow margin criteria range, set at 80-87 Or School that has a three-year average GCI below 75 but has shown at least a five point improvement compared to previous year.	School three-year average does not meet the benchmark, narrow margin criteria, or improvement (five point improvement). School has met criteria for Level 3 for more than three consecutive years.
Number of Schools	56	229	29	5

DRAFT

Benchmark Selection: Graduation Completion Index

Level 2 Benchmark	Level 1 Exemplar	Level 2 Monitor	Level 3 Guiding	Level 4 Intervene
Level 1: 97+ Level 2: 88-96 Level 3: 80-87 Level 4: <80	56	229	29	5
Level 1: 97+ Level 2: 87-96 Level 3: 77-86 Level 4: <77	56	241	17	5
Level 1: 97+ Level 2: 86-96 Level 3: 76-87 Level 4: <76	56	249	9	5

*A GCI of at least 85 is currently required for full accreditation.

Accountability Indicator: Dropout Rate

- **Graduation Completion more widely used by other states for accountability than dropout**
- **Dropout rate is only reported by other states**

Dropout Rate

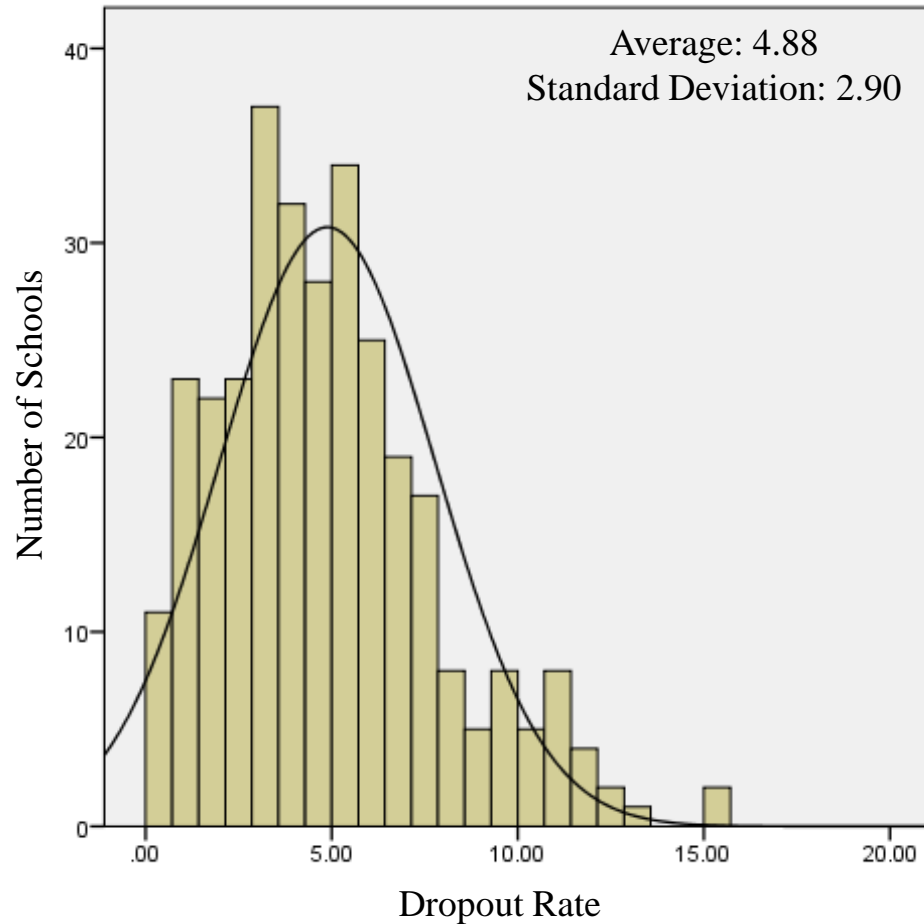
- **How is dropout calculated?**
 - Four-year cohort
 - Dropouts are ***not*** students who are:
 - awarded a diplomas, certificate or GED
 - transferred out of state
 - deceased
 - on a long-term absence
 - still enrolled
 - enrolled in state operated agencies
 - Dropouts are: everyone else

Dropout Example

Outcome	Calculation	Results
	# of Students (Denominator)	Numerator
Diplomas	64	0
GEDs	3	0
Certificates of Completion	2	0
nonIEP/nonLEP students still in School	2	0
IEP/LEP students still in School	(2)	Moved to next cohort
Dropouts	5	5
Totals	76	5
	Dropout = $\frac{5}{76} = 6.58\%$	

Data Patterns: Dropout

Three-Year Average Dropout Rate
School Years 2013-14 through 2015-16
(Outliers Removed)



- Schools fall into a normal distribution for dropout rate
- Using a three-year average stabilizes the scores so that schools aren't moving across accountability levels yearly
- Three-year average dropout rate with outliers removed is 4.88
- Standard deviation 2.9

Benchmark Selection: Dropout

	Level 1 Exemplar	Level 2 Monitor	Level 3 Guide	Level 4 Intervene
DRAFT Criteria	School three-year average dropout rate is less than 3%. (75 th percentile)	School three-year average dropout rate is between 3% and 5.9%. OR School in Level 3 the prior year decreases dropout rate by 1.5% or more	School three-year average is between 6% and 8.9%. OR School in Level 4 the prior year decreases dropout rate by 1.5% or more	School three-year average does not meet the benchmark or improvement. School has met criteria for Level 3 for more than 3 consecutive years.
Number of Schools	85	159	50	25

DRAFT

Policy Implications: GCI

- **Why GCI?**

- All students get points in GCI except long-term absences and dropout
- Gives schools credit for taking steps to help students complete a program of study

Policy Implications: Dropout

- **Why dropout?**
 - Simple calculation
 - Provides schools with a clear measure of how many students they are losing to dropout
 - Simple calculation allows schools to determine if their efforts to reduce dropout are effective